

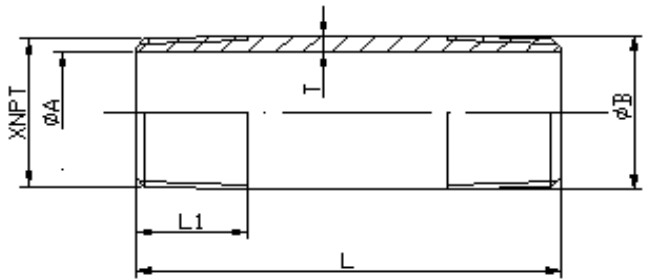
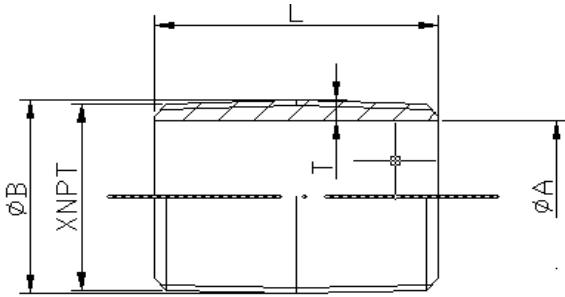
# Brass Nipples • Spec Sheet



\*Product will have LF imprinted on the body for Lead Free

## FEATURES & BENEFITS

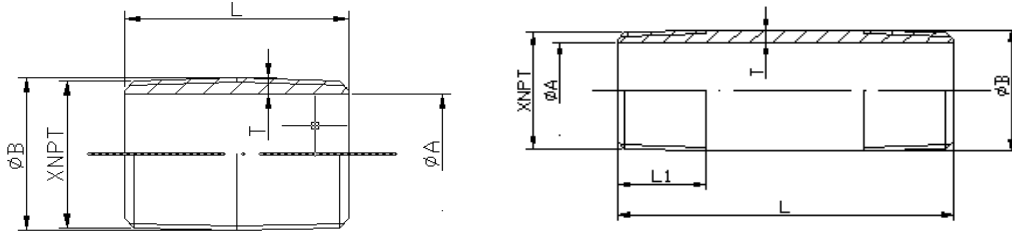
- Schedule 40
- Lead Free Brass Conforms to ASTM B43
- Dimensions and Ends Conform to ASTM B687
- Threads Conform to ASME B1.20.1
- Meets NSF/ANSI61, NSF/ANSI372 & CRN
- Stocked from 1/8" Through 4" Diameters
- Available in Lengths Through 72"
- Specialty Items Such as Toe Nipples are Available
- 66 Pack Assortments in Stock



## DIMENSIONS

Part #	Size	A	B	L	L1	T(min.)	Part #	Size	A	B	L	L1	T(min.)
NBR00CL	1/8XCLOSE	0.281	0.405	3/4		0.058	NBR02CL	3/8XCLOSE	0.495	0.675	1		0.085
NBR00112	1/8X1-1/2	0.281	0.405	1-1/2	0.393	0.058	NBR02112	3/8X1-1/2	0.495	0.675	1-1/2	0.601	0.085
NBR002	1/8X2	0.281	0.405	2	0.393	0.058	NBR022	3/8X2	0.495	0.675	2	0.601	0.085
NBR00212	1/8X2-1/2	0.281	0.405	2-1/2	0.393	0.058	NBR02212	3/8X2-1/2	0.495	0.675	2-1/2	0.601	0.085
NBR003	1/8X3	0.281	0.405	3	0.393	0.058	NBR023	3/8X3	0.495	0.675	3	0.601	0.085
NBR00312	1/8X3-1/2	0.281	0.405	3-1/2	0.393	0.058	NBR02312	3/8X3-1/2	0.495	0.675	3-1/2	0.601	0.085
NBR004	1/8X4	0.281	0.405	4	0.393	0.058	NBR024	3/8X4	0.495	0.675	4	0.601	0.085
NBR00412	1/8X4-1/2	0.281	0.405	4-1/2	0.393	0.058	NBR02412	3/8X4-1/2	0.495	0.675	4-1/2	0.601	0.085
NBR005	1/8X5	0.281	0.405	5	0.393	0.058	NBR025	3/8X5	0.495	0.675	5	0.601	0.085
NBR00512	1/8X5-1/2	0.281	0.405	5-1/2	0.393	0.058	NBR02512	3/8X5-1/2	0.495	0.675	5-1/2	0.601	0.085
NBR006	1/8X6	0.281	0.405	6	0.393	0.058	NBR026	3/8X6	0.495	0.675	6	0.601	0.085
NBR0010	1/8X10	0.281	0.405	10	0.393	0.058	NBR028	3/8X8	0.495	0.675	8	0.601	0.085
NBR01CL	1/4XCLOSE	0.376	0.540	7/8		0.077	NBR0210	3/8X10	0.495	0.675	10	0.601	0.085
NBR01112	1/4X1-1/2	0.376	0.540	1-1/2	0.594	0.077	NBR0212	3/8X12	0.495	0.675	12	0.601	0.085
NBR012	1/4X2	0.376	0.540	2	0.594	0.077	NBR0218	3/8X18	0.495	0.675	18	0.601	0.085
NBR01212	1/4X2-1/2	0.376	0.540	2-1/2	0.594	0.077	NBR03CL	1/2XCLOSE	0.626	0.840	1-1/8		0.101
NBR013	1/4X3	0.376	0.540	3	0.594	0.077	NBR03112	1/2X1-1/2	0.626	0.840	1-1/2	0.534	0.101
NBR01312	1/4X3-1/2	0.376	0.540	3-1/2	0.594	0.077	NBR032	1/2X2	0.626	0.840	2	0.781	0.101
NBR014	1/4X4	0.376	0.540	4	0.594	0.077	NBR03212	1/2X2-1/2	0.626	0.840	2-1/2	0.781	0.101
NBR01412	1/4X4-1/2	0.376	0.540	4-1/2	0.594	0.077	NBR033	1/2X3	0.626	0.840	3	0.781	0.101
NBR015	1/4X5	0.376	0.540	5	0.594	0.077	NBR03312	1/2X3-1/2	0.626	0.840	3-1/2	0.781	0.101
NBR01512	1/4X5-1/2	0.376	0.540	5-1/2	0.594	0.077	NBR034	1/2X4	0.626	0.840	4	0.781	0.101
NBR016	1/4X6	0.376	0.540	6	0.594	0.077	NBR03412	1/2X4-1/2	0.626	0.840	4-1/2	0.781	0.101
NBR018	1/4X8	0.376	0.540	8	0.594	0.077	NBR035	1/2X5	0.626	0.840	5	0.781	0.101
NBR0110	1/4X10	0.376	0.540	10	0.594	0.077	NBR03512	1/2X5-1/2	0.626	0.840	5-1/2	0.781	0.101
NBR0112	1/4X12	0.376	0.540	12	0.594	0.077	NBR036	1/2X6	0.626	0.840	6	0.781	0.101

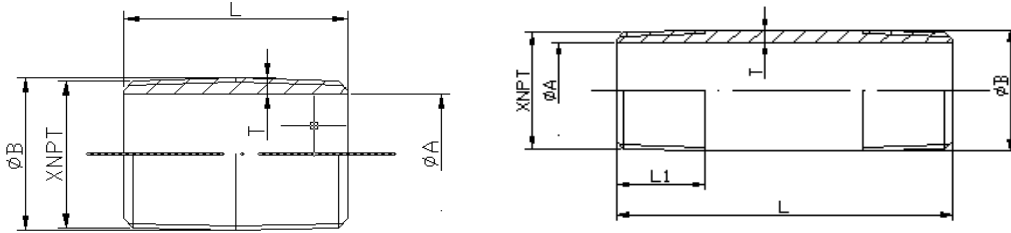
# Brass Nipples • Spec Sheet



## DIMENSIONS

Part #	Size	A	B	L	L1	T(min.)	Part #	Size	A	B	L	L1	T(min.)
NBR037	1/2X7	0.626	0.840	7	0.781	0.101	NBR056	1X6	1.063	1.315	6	0.985	0.119
NBR038	1/2X8	0.626	0.840	8	0.781	0.101	NBR057	1X7	1.063	1.315	7	0.985	0.119
NBR039	1/2X9	0.626	0.840	9	0.781	0.101	NBR058	1X8	1.063	1.315	8	0.985	0.119
NBR0310	1/2X10	0.626	0.840	10	0.781	0.101	NBR059	1X9	1.063	1.315	9	0.985	0.119
NBR0311	1/2X11	0.626	0.840	11	0.781	0.101	NBR0510	1X10	1.063	1.315	10	0.985	0.119
NBR0312	1/2X12	0.626	0.840	12	0.781	0.101	NBR0512	1X12	1.063	1.315	12	0.985	0.119
NBR0318	1/2X18	0.626	0.840	18	0.781	0.101	NBR0514	1X14	1.063	1.315	14	0.985	0.119
NBR0324	1/2X24	0.626	0.840	24	0.781	0.101	NBR0518	1X18	1.063	1.315	18	0.985	0.119
NBR0336	1/2X36	0.626	0.840	36	0.781	0.101	NBR0524	1X24	1.063	1.315	24	0.985	0.119
NBR0348	1/2X48	0.626	0.840	48	0.781	0.101	NBR0530	1X30	1.063	1.315	30	0.985	0.119
NBR04CL	3/4XCLOSE	0.822	1.050	1-3/8		0.108	NBR0536	1X36	1.063	1.315	36	0.985	0.119
NBR04112	3/4X1-1/2	0.822	1.050	1-1/2	0.546	0.108	NBR0548	1X48	1.063	1.315	48	0.985	0.119
NBR042	3/4X2	0.822	1.050	2	0.793	0.108	NBR0560	1X60	1.063	1.315	60	0.985	0.119
NBR04212	3/4X2-1/2	0.822	1.050	2-1/2	0.793	0.108	NBR06CL	11/4XCLOSE	1.368	1.660	1-5/8		0.138
NBR043	3/4X3	0.822	1.050	3	0.793	0.108	NBR062	11/4X2	1.368	1.660	2	0.707	0.138
NBR04312	3/4X3-1/2	0.822	1.050	3-1/2	0.793	0.108	NBR06212	11/4X2-1/2	1.368	1.660	2-1/2	1.009	0.138
NBR044	3/4X4	0.822	1.050	4	0.793	0.108	NBR063	11/4X3	1.368	1.660	3	1.009	0.138
NBR04412	3/4X4-1/2	0.822	1.050	4-1/2	0.793	0.108	NBR06312	11/4X3-1/2	1.368	1.660	3-1/2	1.009	0.138
NBR045	3/4X5	0.822	1.050	5	0.793	0.108	NBR064	11/4X4	1.368	1.660	4	1.009	0.138
NBR04512	3/4X5-1/2	0.822	1.050	5-1/2	0.793	0.108	NBR06412	11/4X4-1/2	1.368	1.660	4-1/2	1.009	0.138
NBR046	3/4X6	0.822	1.050	6	0.793	0.108	NBR065	11/4X5	1.368	1.660	5	1.009	0.138
NBR047	3/4X7	0.822	1.050	7	0.793	0.108	NBR06512	11/4X5-1/2	1.368	1.660	5-1/2	1.009	0.138
NBR048	3/4X8	0.822	1.050	8	0.793	0.108	NBR066	11/4X6	1.368	1.660	6	1.009	0.138
NBR049	3/4X9	0.822	1.050	9	0.793	0.108	NBR068	11/4X8	1.368	1.660	8	1.009	0.138
NBR0410	3/4X10	0.822	1.050	10	0.793	0.108	NBR069	11/4X9	1.368	1.660	9	1.009	0.138
NBR0412	3/4X12	0.822	1.050	12	0.793	0.108	NBR0610	11/4X10	1.368	1.660	10	1.009	0.138
NBR0418	3/4X18	0.822	1.050	18	0.793	0.108	NBR0612	11/4X12	1.368	1.660	12	1.009	0.138
NBR0424	3/4X24	0.822	1.050	24	0.793	0.108	NBR0618	11/4X18	1.368	1.660	18	1.009	0.138
NBR0430	3/4X30	0.822	1.050	30	0.793	0.108	NBR0624	11/4X24	1.368	1.660	24	1.009	0.138
NBR0436	3/4X36	0.822	1.050	36	0.793	0.108	NBR0632	11/4X32	1.368	1.660	32	1.009	0.138
NBR0448	3/4X48	0.822	1.050	48	0.793	0.108	NBR0636	11/4X36	1.368	1.660	36	1.009	0.138
NBR0460	3/4X60	0.822	1.050	60	0.793	0.108	NBR0648	11/4X48	1.368	1.660	48	1.009	0.138
NBR05CL	1XCLOSE	1.063	1.315	1-1/2		0.119	NBR0660	11/4X60	1.368	1.660	60	1.009	0.138
NBR052	1X2	1.063	1.315	2	0.683	0.119	NBR07CL	1-1/2XCLOSE	1.600	1.900	1-3/4		0.142
NBR05212	1X2-1/2	1.063	1.315	2-1/2	0.985	0.119	NBR072	1-1/2X2	1.600	1.900	2	0.757	0.142
NBR053	1X3	1.063	1.315	3	0.985	0.119	NBR07212	1-1/2X2-1/2	1.600	1.900	2-1/2	1.058	0.142
NBR05312	1X3-1/2	1.063	1.315	3-1/2	0.985	0.119	NBR073	1-1/2X3	1.600	1.900	3	1.058	0.142
NBR054	1X4	1.063	1.315	4	0.985	0.119	NBR07312	1-1/2X3-1/2	1.600	1.900	3-1/2	1.058	0.142
NBR05412	1X4-1/2	1.063	1.315	4-1/2	0.985	0.119	NBR074	1-1/2X4	1.600	1.900	4	1.058	0.142
NBR055	1X5	1.063	1.315	5	0.985	0.119	NBR07412	1-1/2X4-1/2	1.600	1.900	4-1/2	1.058	0.142
NBR05512	1X5-1/2	1.063	1.315	5-1/2	0.985	0.119	NBR075	1-1/2X5	1.600	1.900	5	1.058	0.142

# Brass Nipples • Spec Sheet



## DIMENSIONS

Part #	Size	A	B	L	L1	T(min.)	Part #	Size	A	B	L	L1	T(min.)
NBR07512	1-1/2X5-1/2	1.600	1.900	5-1/2	1.058	0.142	NBR09CL	2-1/2XCLOSE	2.501	2.875	2-1/2		0.177
NBR076	1-1/2X6	1.600	1.900	6	1.058	0.142	NBR093	2-1/2X3	2.501	2.875	3	1.137	0.177
NBR077	1-1/2X7	1.600	1.900	7	1.058	0.142	NBR09312	2-1/2X3-1/2	2.501	2.875	3-1/2	1.571	0.177
NBR07712	1-1/2X7-1/2	1.600	1.900	7-1/2	1.058	0.142	NBR094	2-1/2X4	2.501	2.875	4	1.571	0.177
NBR078	1-1/2X8	1.600	1.900	8	1.058	0.142	NBR095	2-1/2X5	2.501	2.875	5	1.571	0.177
NBR0710	1-1/2X10	1.600	1.900	10	1.058	0.142	NBR096	2-1/2X6	2.501	2.875	6	1.571	0.177
NBR0712	1-1/2X12	1.600	1.900	12	1.058	0.142	NBR098	2-1/2X8	2.501	2.875	8	1.571	0.177
NBR0718	1-1/2X18	1.600	1.900	18	1.058	0.142	NBR0912	2-1/2X12	2.501	2.875	12	1.571	0.177
NBR0720	1-1/2X20	1.600	1.900	20	1.058	0.142	NBR0918	2-1/2X18	2.501	2.875	18	1.571	0.177
NBR0724	1-1/2X24	1.600	1.900	24	1.058	0.142	NBR0924	2-1/2X24	2.501	2.875	24	1.571	0.177
NBR0730	1-1/2X30	1.600	1.900	30	1.058	0.142	NBR10CL	3XCLOSE	3.062	3.500	2-5/8		0.207
NBR0736	1-1/2X36	1.600	1.900	36	1.058	0.142	NBR103	3X3	3.062	3.500	3	1.200	0.207
NBR0748	1-1/2X48	1.600	1.900	48	1.058	0.142	NBR10312	3X3-1/2	3.062	3.500	3-1/2	1.634	0.207
NBR0760	1-1/2X60	1.600	1.900	60	1.058	0.142	NBR104	3X4	3.062	3.500	4	1.634	0.207
NBR08CL	2XCLOSE	2.063	2.375	2		0.147	NBR10412	3X4-1/2	3.062	3.500	4-1/2	1.634	0.207
NBR08212	2X2-1/2	2.063	2.375	2-1/2	1.058	0.147	NBR105	3X5	3.062	3.500	5	1.634	0.207
NBR083	2X3	2.063	2.375	3	1.058	0.147	NBR10512	3X5-1/2	3.062	3.500	5-1/2	1.634	0.207
NBR08312	2X3-1/2	2.063	2.375	3-1/2	1.058	0.147	NBR106	3X6	3.062	3.500	6	1.634	0.207
NBR084	2X4	2.063	2.375	4	1.058	0.147	NBR107	3X7	3.062	3.500	7	1.634	0.207
NBR08412	2X4-1/2	2.063	2.375	4-1/2	1.058	0.147	NBR108	3X8	3.062	3.500	8	1.634	0.207
NBR085	2X5	2.063	2.375	5	1.058	0.147	NBR1010	3X10	3.062	3.500	10	1.634	0.207
NBR08512	2X5-1/2	2.063	2.375	5-1/2	1.058	0.147	NBR1012	3X12	3.062	3.500	12	1.634	0.207
NBR086	2X6	2.063	2.375	6	1.058	0.147	NBR1024	3X24	3.062	3.500	24	1.634	0.207
NBR087	2X7	2.063	2.375	7	1.058	0.147	NBR11CL	4XCLOSE	4.000	4.500	2-7/8		0.236
NBR088	2X8	2.063	2.375	8	1.058	0.147	NBR113	4X3	4.000	4.500	3	1.500	0.236
NBR089	2X9	2.063	2.375	9	1.058	0.147	NBR114	4X4	4.000	4.500	4	1.734	0.236
NBR0810	2X10	2.063	2.375	10	1.058	0.147	NBR115	4X5	4.000	4.500	5	1.734	0.236
NBR0812	2X12	2.063	2.375	12	1.058	0.147	NBR11512	4X5-1/2	4.000	4.500	5-1/2	1.734	0.236
NBR0818	2X18	2.063	2.375	18	1.058	0.147	NBR116	4X6	4.000	4.500	6	1.734	0.236
NBR0824	2X24	2.063	2.375	24	1.058	0.147	NBR118	4X8	4.000	4.500	8	1.734	0.236
NBR0830	2X30	2.063	2.375	30	1.058	0.147	NBR1112	4X12	4.000	4.500	12	1.734	0.236
NBR0836	2X36	2.063	2.375	36	1.058	0.147	NBR03AS66	66 ASST	0.626	0.840			0.101
NBR0848	2X48	2.063	2.375	48	1.058	0.147	NBR04AS66	66 ASST	0.822	1.050			0.108
NBR0860	2X60	2.063	2.375	60	1.058	0.147	NBR086TOE	2X6	2.063	2.375	6	1.058	0.147
NBR0872	2X72	2.063	2.375	72	1.058	0.147	NBR106TOE	3X6	3.062	3.500	8	1.634	0.207



\*This product complies with 0.25% weighted average lead content on wetted surfaces in accordance with the Safe Drinking Water Act (SDWA) / Federal Public Law No. 111-380.

**CALIFORNIA** 5595 Fresca Dr., La Palma CA 90623  
**TEXAS** 1150 Silber Rd., Houston TX 77055  
**ILLINOIS** 278 Windy Point Dr., Glendale Heights, IL 60139  
**GEORGIA** 113 Industrial Blvd., Americus, Georgia 31709  
**NEW YORK** PO Box 27, Rt.22, Brewster NY 10509  
 WEB: [www.matco-norca.com](http://www.matco-norca.com)

• Phone: 866-532-8306 • Fax: 866-532-8307  
 • Phone: 800-935-5456 • Fax: 713-680-2999  
 • Phone: 844-412-5068 • Fax: 800-640-2252  
 • Phone: 800-433-7526 • Fax: 800-533-5134  
 • Phone: 800-431-2082 • Fax: 845-278-9056  
 EMAIL: [mail@matco-norca.com](mailto:mail@matco-norca.com)